



Ground Operations

September 24, 2024

Bruce Rineer, Manager, Noise Section

Overview

Issue/Concern

- Residents of close-in communities share concerns with noise that they attribute to nighttime runup operations
- Runups happen relatively infrequently, and only in designated areas
- Nighttime noise exists due to aircraft taxi operations, start of takeoff roll and use of reverse thrust on arrival.

Agenda

- Run-Up Frequency
- MAA Tenant Directives
- Other sources of Ground Noise

MAA Tenant Directives Related to Ground Noise

- MAA regulates ground activity via two [Tenant Directives](#):
 - Tenant Directive BWI 203.1 – **Aircraft Pushback Procedures**
 - Tenant Directive BWI 501.1 – **Noise Abatement Procedures**

Tenant Directive 203.1

- C. Reverse-thrust power-back operations are limited to military aircraft on remote parking spots and are approved on a case-by-case basis by Airport Operations.

4. Control of Ground Based Noise Sources

- Power-back Restrictions: Reverse-thrust power-back operations are limited to military aircraft on remote parking spots and are approved on a case-by-case basis by Airport Operations consistent with Tenant Directive 203.1.
- Engine Maintenance Runup Restrictions: Maintenance engine run-up reporting procedures, locations, durations, and prohibitions are restricted as follows:

Summary of engine maintenance runup restrictions:

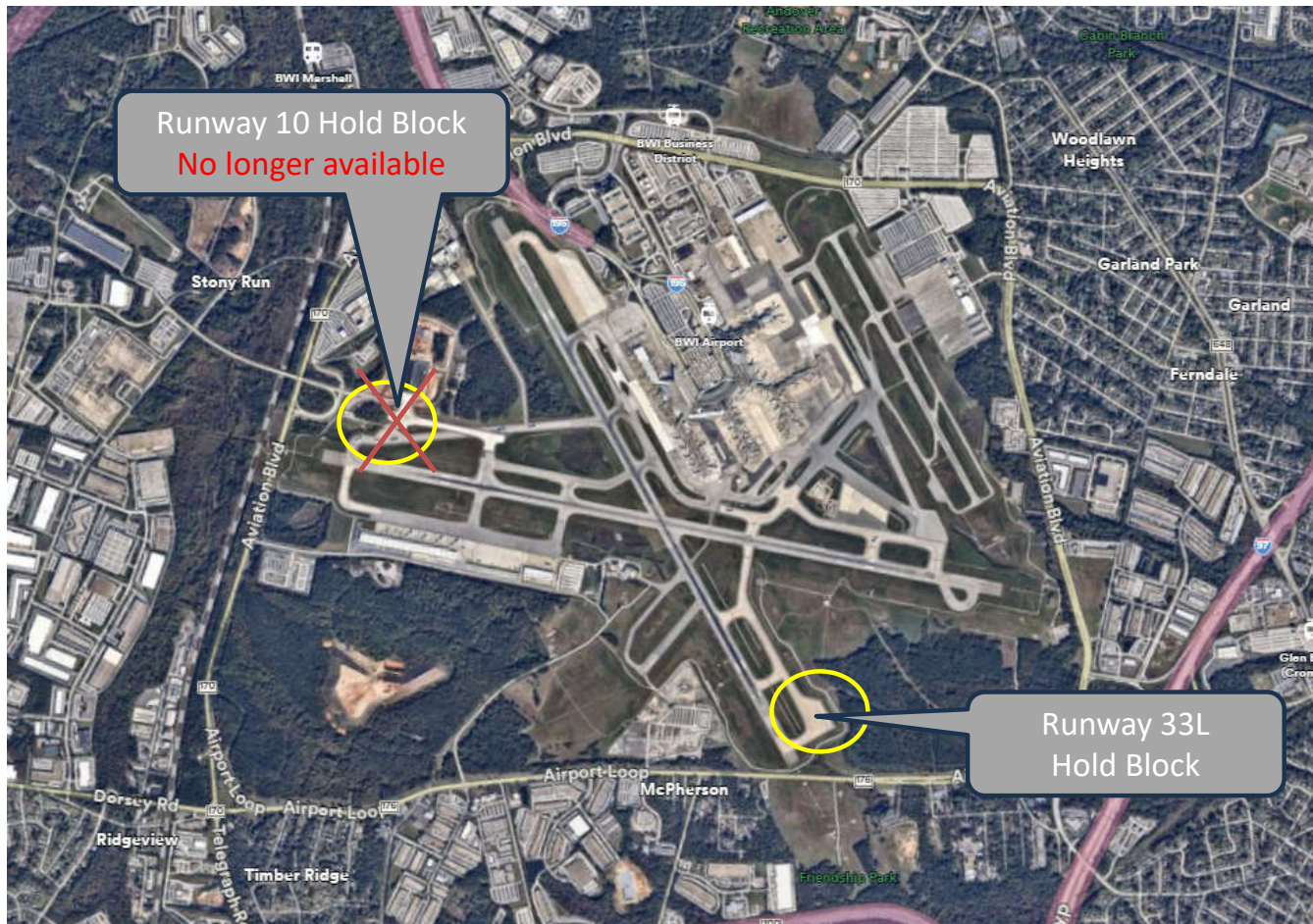
Engine Maintenance Runup Restrictions		
Location	Heading	Duration
RWY 10 Hold Block	190 - 220 Degrees	60 Seconds or Less
RWY 33L Hold Block	140 – 160 Degrees	60 Seconds or Less

Exempted run-ups must not exceed a total of five (5) minutes duration in intervals of 60 seconds or less and unless specifically exempted, run-ups are not authorized between 2300 and 0700.

- Prior permission must be obtained from the BWI Marshall Airport Operations Center which shall be denied unless it can be shown that failure to conduct the runup will delay departure of a scheduled passenger flight.

Tenant Directive 501.1

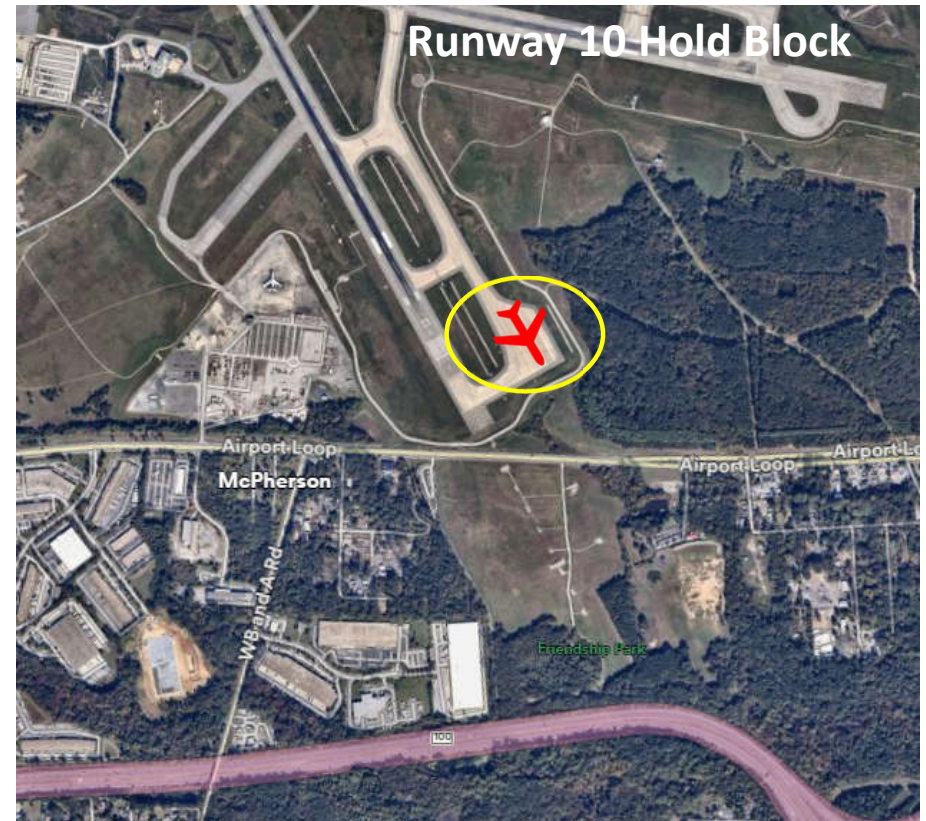
Engine Maintenance Runup Restrictions



Engine Maintenance Runup Restrictions

Runway 33L Hold Block

- Prior permission required
- Heading 140-160 degrees
- 60 seconds or less in duration





'be better'