



BWI-Thurgood Marshall Airport Operations and Noise Exposure

Presented by DC Metroplex BWI Community Roundtable in cooperation with Vianair, Inc

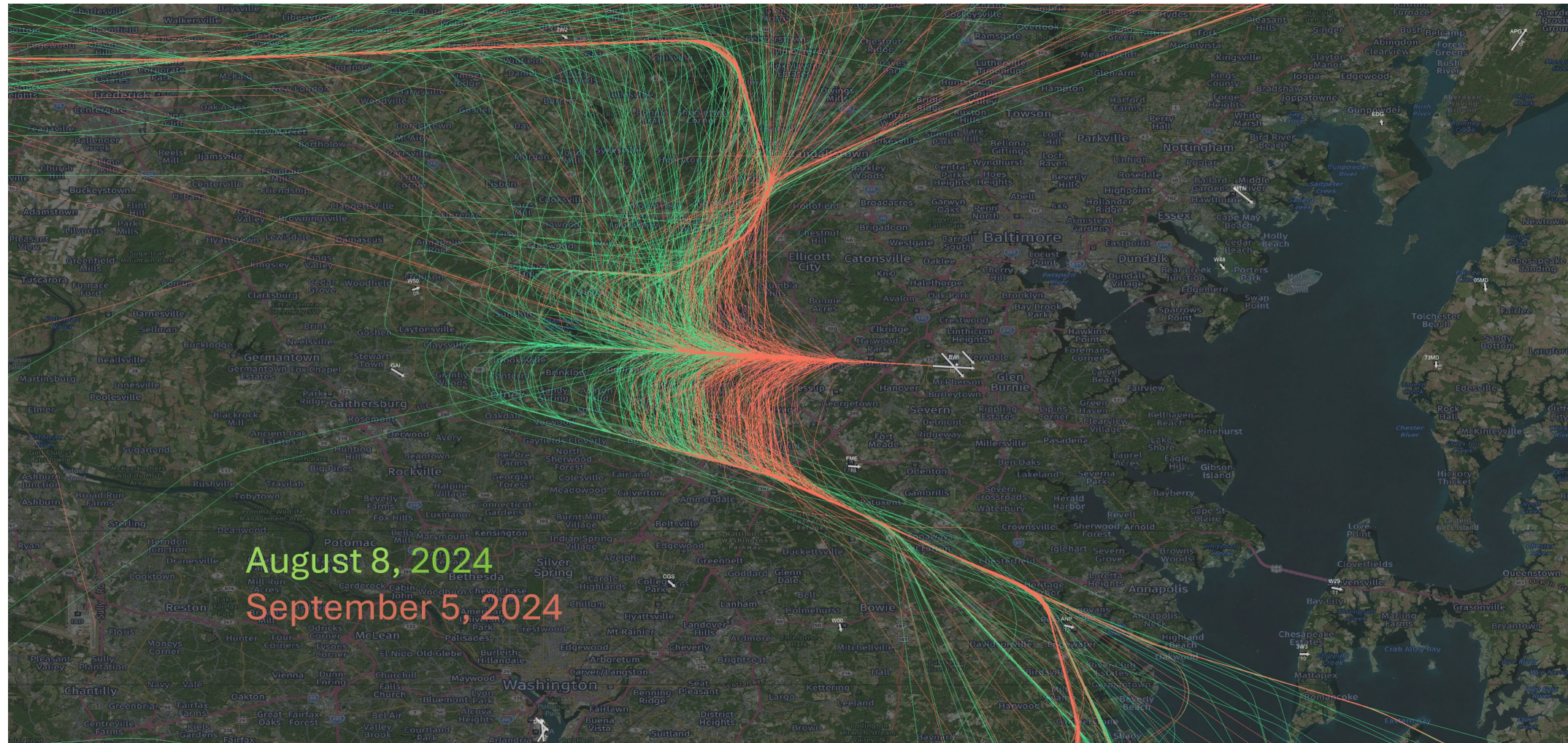
Before and After the September 5th 2024 Approach Procedure Change

On September 5th 2024 there was a change to the approach procedures to Runway 10 into BWI Airport. Below is a comparison of a representative day before (Aug 8th) and after (September 23rd) the change was made.

The two days that we looked at had similar arrivals to runway 10 and gave both pilots and controllers enough time to become familiar with the new procedure.

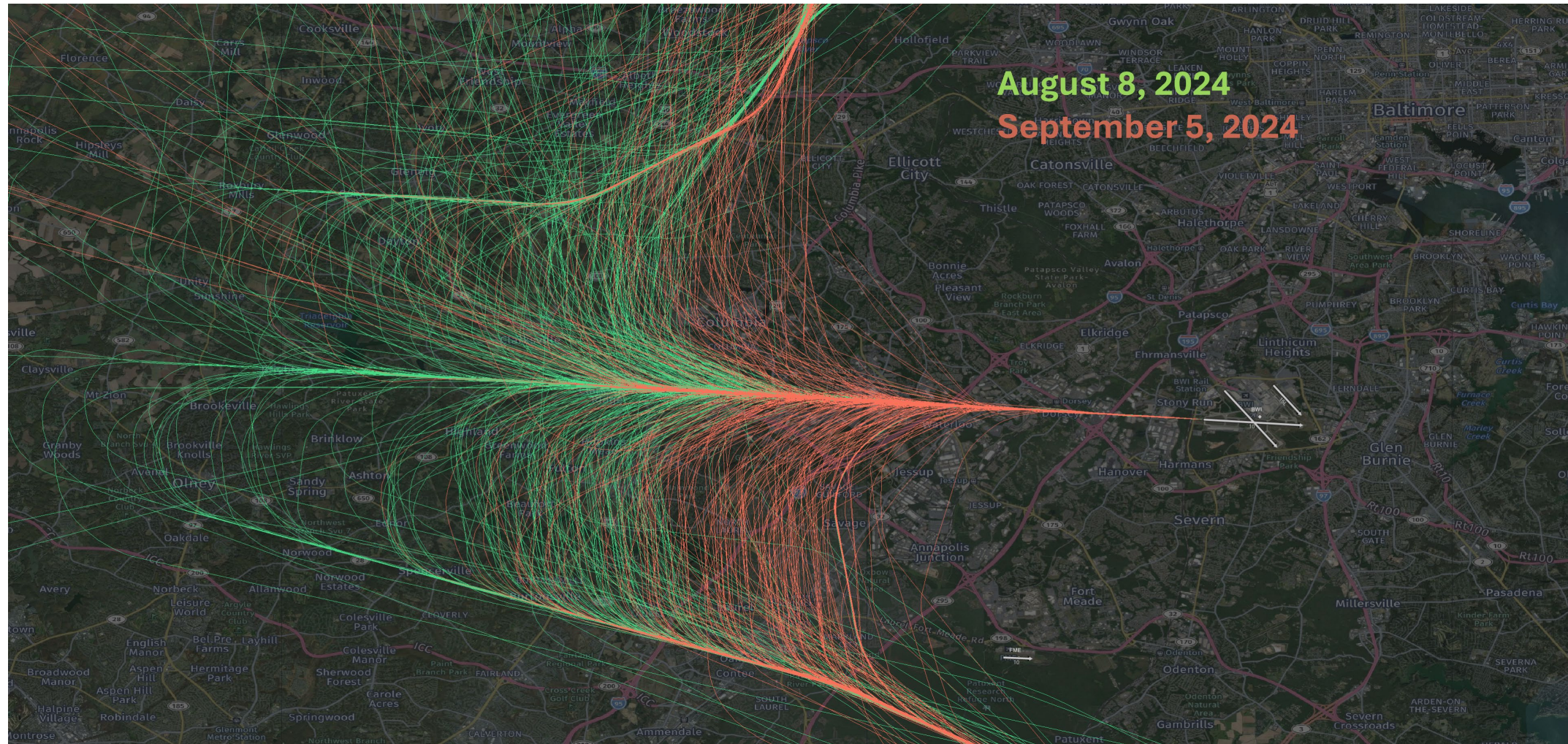
August 8th Rwy 10 Arrivals 337
September 23 Rwy 10 Arrivals 336

Traffic flow before and after the September 5th 2024 Approach Procedure Change



Traffic flow before and after the September 5th 2024 Approach Procedure Change

A little closer look



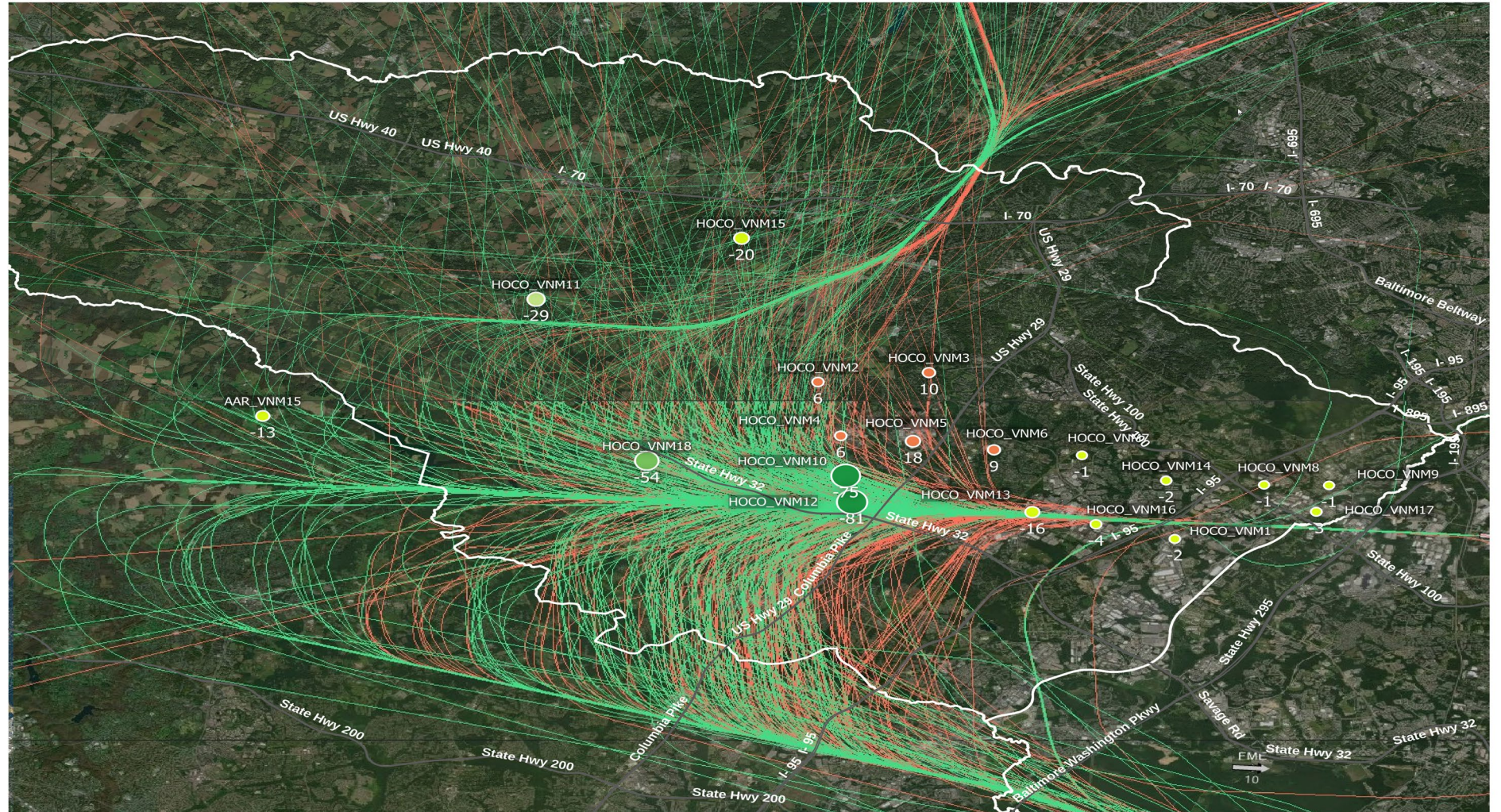
Traffic flow before and after the September 5th 2024 Approach Procedure Change

Comparison at 55db

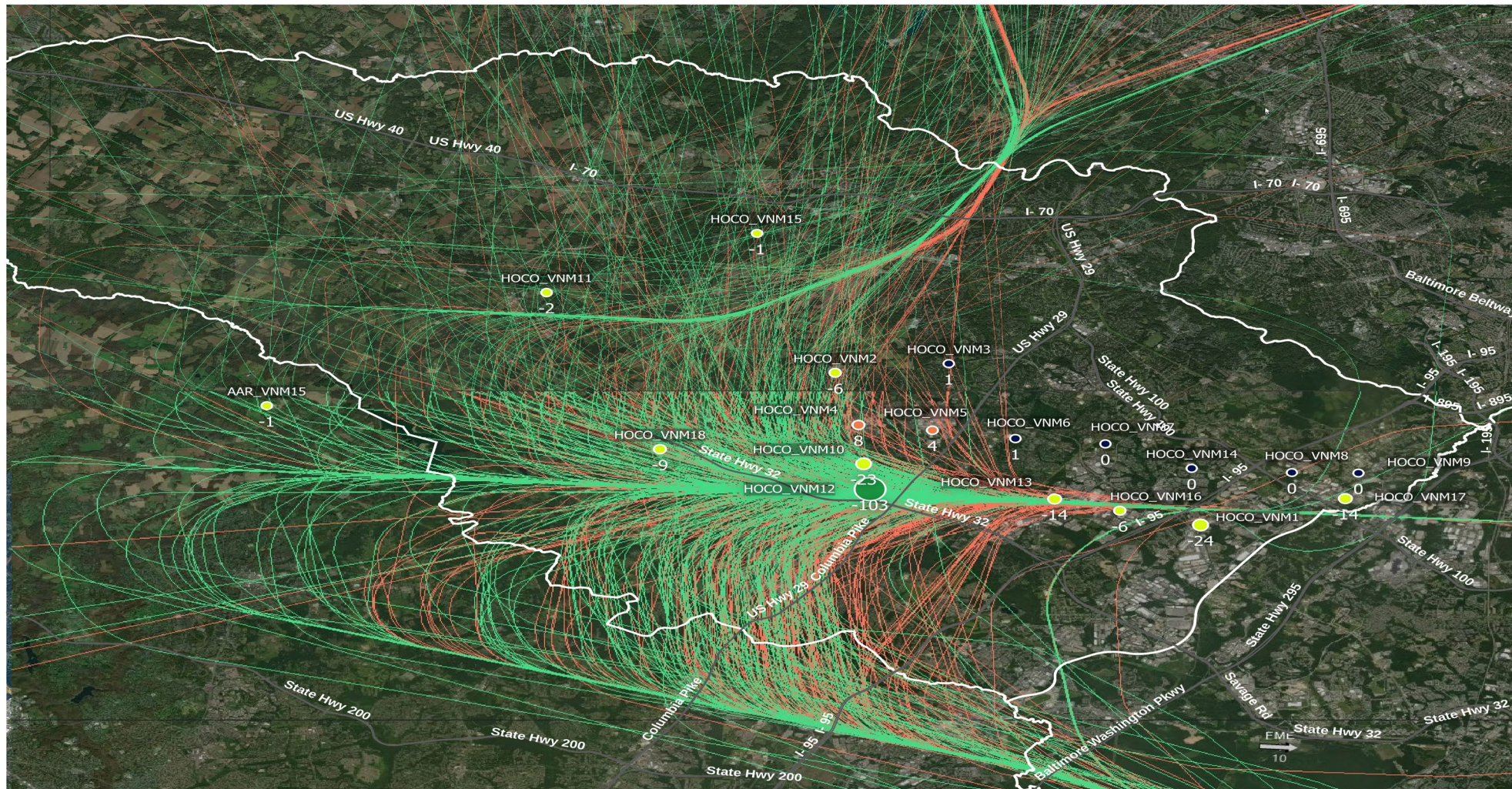
The graphic to the right depicts a comparison between the number of flights that exceed 55 DB on August 8th and September 23rd.

Each Virtual Noise Monitor (VNM) has a Name, Color and a Value associated with it.

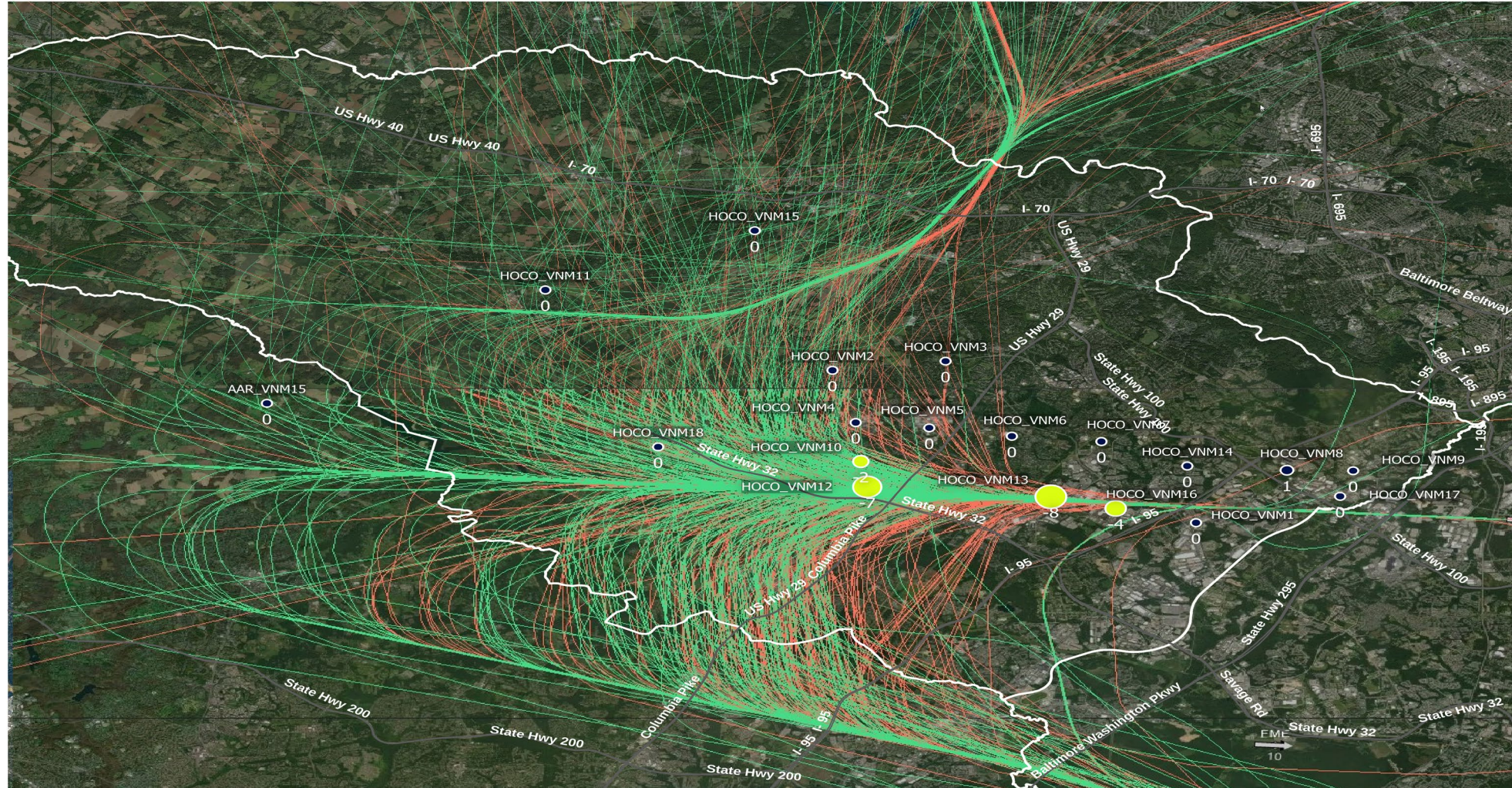
HOCO_VNM12 has a **GREEN** color and a value of -81. This shows that September 23rd had **81 LESS** noise events above 55db than August 8th.



Noise Exposure – Full Virtual Noise Monitor Grid, All Operational Flows *Comparison at 65db*



Noise Exposure – Full Virtual Noise Monitor Grid, All Operational Flows *Comparison at 75db*



Supporting data for the above graphics

VMN	Description	Number-of-Events-Above 55dBA			Number-of-Events-Above 65dBA			Number-of-Events-Above 75dBA		
		8 th August 2024	23 th September 2024	08Aug2024-23Sep2024	8 th August 2024	23 th September 2024	08Aug2024-23Sep2024	8 th August 2024	23 th September 2024	08Aug2024-23Sep2024
HOCO_VNM1	Howard Square Apartments	330	328	-2	113	89	-24	0	0	0
HOCO_VNM2	HCPSS Administration Campus	37	43	6	13	7	-6	0	0	0
HOCO_VNM3	Centennial Park	2	12	10	0	1	1	0	0	0
HOCO_VNM4	HoCo General Hospital	30	36	6	4	12	8	0	0	0
HOCO_VNM5	Merriweather Post Pavillion	6	24	18	0	4	4	0	0	0
HOCO_VNM6	Oakland Mills HS	1	10	9	0	1	1	0	0	0
HOCO_VNM7	Long Reach HS	1	0	-1	0	0	0	0	0	0
HOCO_VNM8	Troy Park	3	2	-1	1	1	0	0	1	1
HOCO_VNM9	Harwood Park N'hood	4	3	-1	1	1	0	0	0	0
HOCO_VNM10	Abiding Savior Lutheran	213	138	-75	50	27	-23	2	0	-2
HOCO_VNM11	Tridelphia Ridge ES	44	15	-29	2	0	-2	0	0	0
HOCO_VNM12	Atholton HS	320	239	-81	257	154	-103	15	8	-7
HOCO_VNM13	Christ Church Episcopal	333	317	-16	326	312	-14	14	6	-8
HOCO_VNM14	Mayfield Woods MS	4	2	-2	0	0	0	0	0	0
HOCO_VNM15	Manor Woods ES	31	11	-20	3	2	-1	0	0	0
HOCO_VNM16	Gateway Site	337	333	-4	323	317	-6	7	3	-4
HOCO_VNM17	Wordour Bluffs	330	327	-3	96	82	-14	0	0	0
HOCO_VNM18	St. Louis Catholic	94	40	-54	18	9	-9	0	0	0