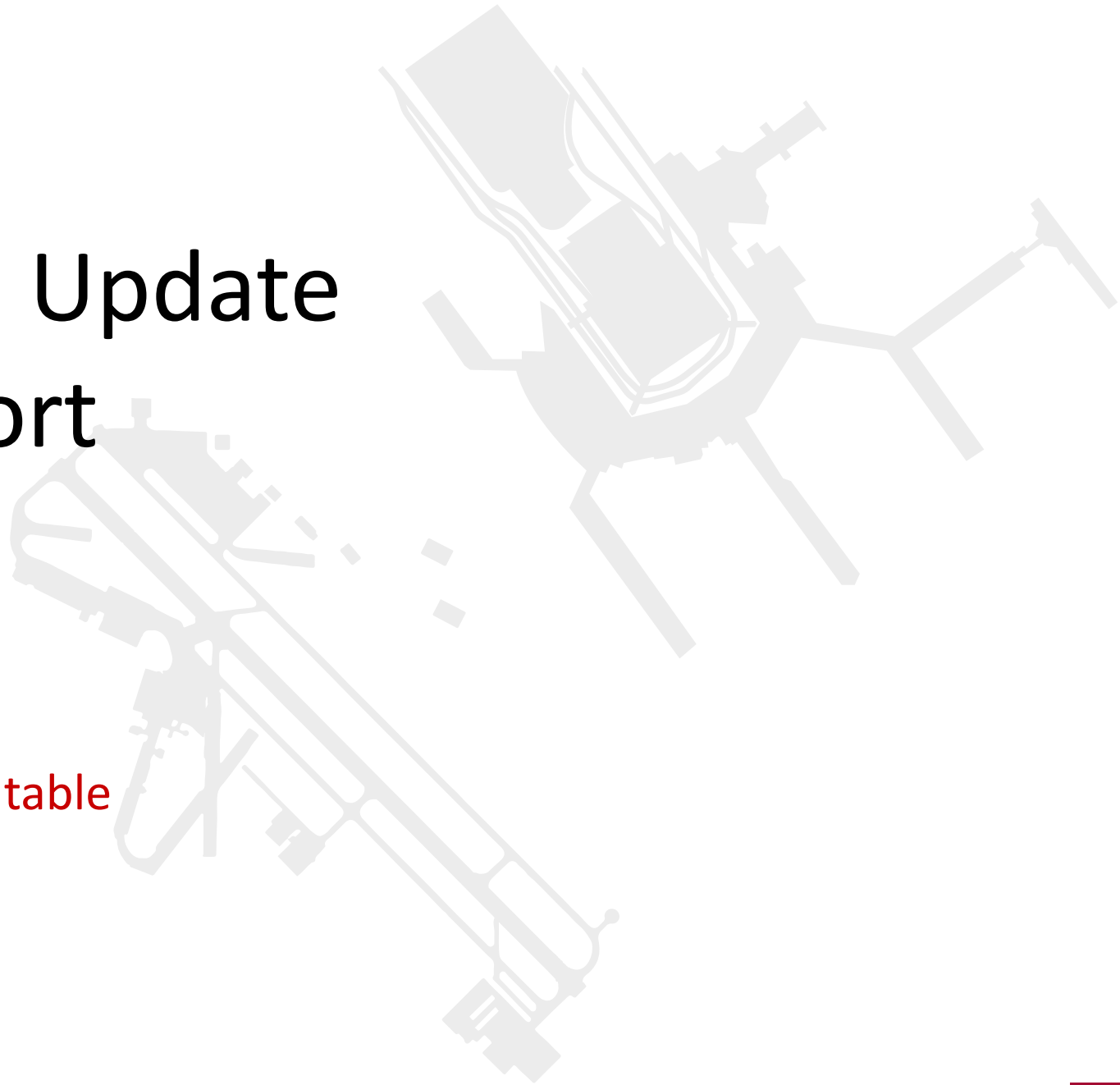


Airport Noise Zone Update BWI Marshall Airport

DC Metroplex BWI Community Roundtable
February 24, 2026

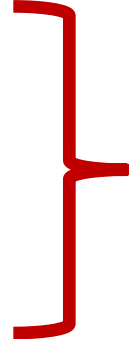


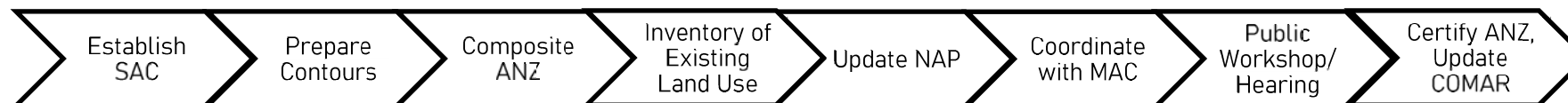
Key Points/Overview

- The Maryland Environmental Noise Act of 1974 requires an “assessment of the noise environment”, delineation of a "noise zone“, and development of a noise abatement plan every five years*
- The **Code of Maryland Regulations** prescribes the noise metric, methodology, compatible land uses, consideration for noise abatement plan elements, and the permit process for construction within the Noise Zone
- The most recent ANZ for BWI Marshall, certified in 2021, is referenced in COMAR Section 11.03.01.12 and incorporated by reference in COMAR Section 11.03.01.01-1(B)(5)
- MAA initiated an update to the ANZ for BWI in January 2025, and has completed the technical work
- MAA proposes to update the references in COMAR to reflect an updated Airport Noise Zone (ANZ) and Noise Abatement Plan (NAP) for BWI
- The Maryland Aviation Commission is charged with the approval of regulations prior to their adoption by the MAA Executive Director

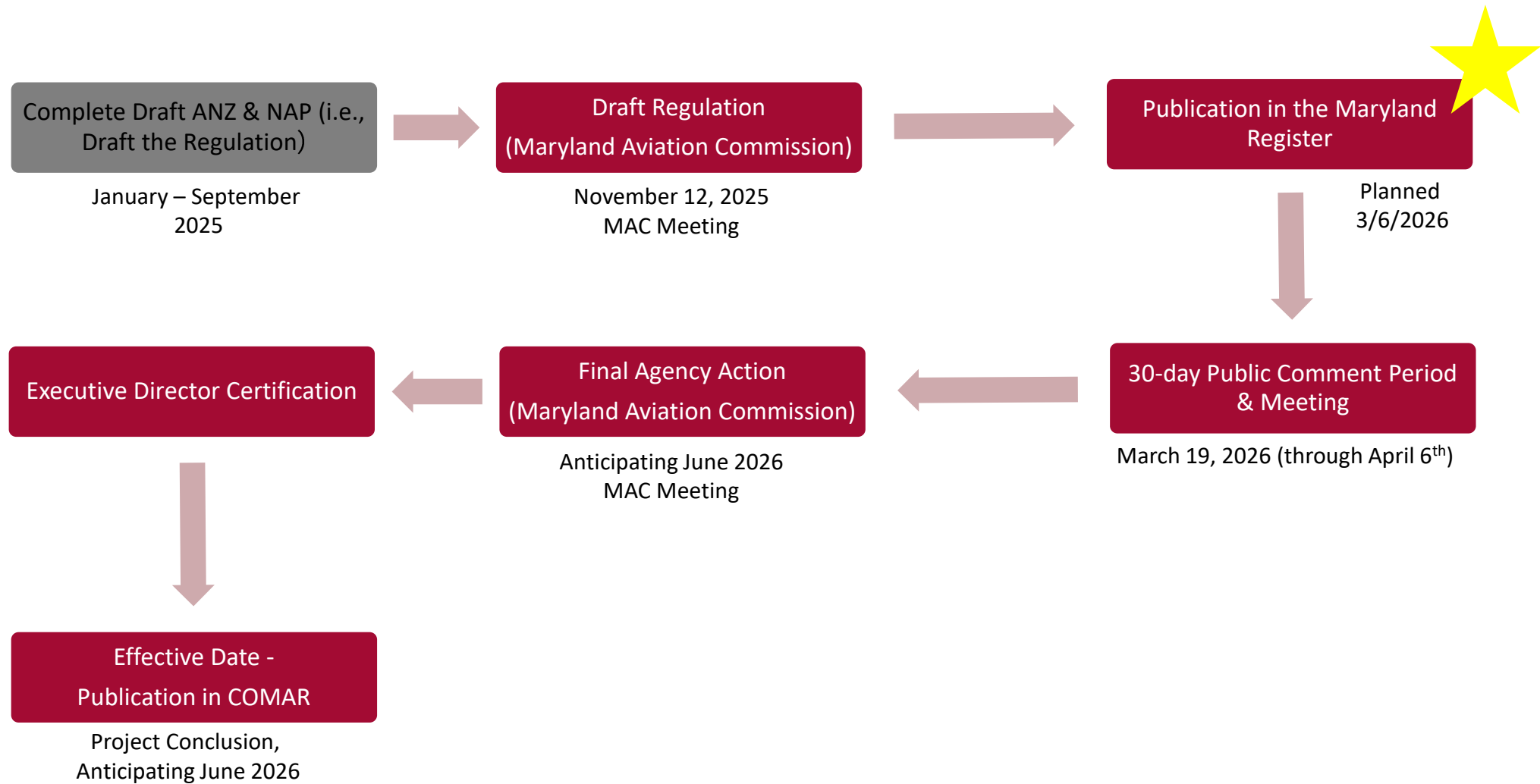
ANZ Scope & Process

- Establish Stakeholder Advisory Committee (SAC)
- Prepare base year, 5-year, 10-year forecast contours
- Compile composite Airport Noise Zone (ANZ)
- Prepare inventory of existing land use
- Update the Noise Abatement Plan
- Obtain approval from MAC to circulate proposed ANZ Update
- **Conduct public workshop/hearing** 
- Obtain approval from MAC to submit Certified ANZ Update for incorporation into COMAR

 Completed, January 2025 – September 2025



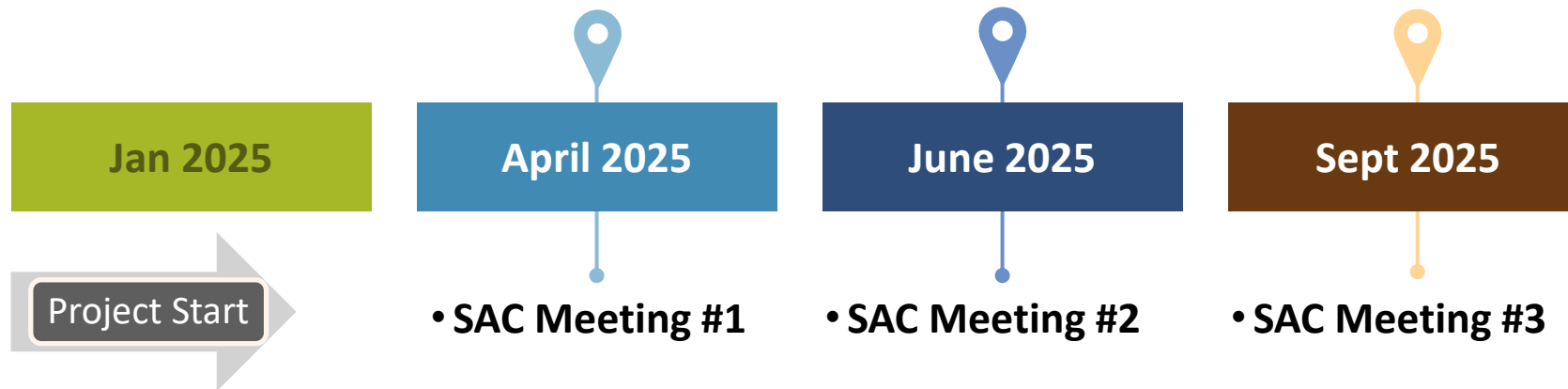
Overall Schedule



Stakeholder Advisory Committee (SAC)

BWI Stakeholder Advisory Committee

- Elected Officials (Anne Arundel County Council District 1, Howard County District 4)
- County Gov't (Anne Arundel and Howard Counties Office of Planning and Zoning, Baltimore County Office of Planning)
- Community Associations (Roundtable, LSIA, Glen Burnie Improvement Assoc, etc)
- Airport Stakeholders (FAA, Southwest, United, Prime, FedEx, BWI Business Partnership, etc)



Invited SAC Membership & Attendance

Organization	Meeting 1	Meeting 2	Meeting 3	Organization	Meeting 1	Meeting 2	Meeting 3
ABX Air, Inc				FedEx			
Aircraft Owners and Pilots Association				Glen Burnie Association			
Airlines for America				Glen Burnie Improvement Association			
Amazon PrimeAir				Greater Ferndale Community Civic Assn.			
Anne Arundel County		X	X	Harmans Civic Association		X	X
Anne Arundel County	X			Howard County Distirct 4			
Anne Arundel County	X			Howard County Office of Planning and Zoning	X		
Anne Arundel County Council District 1				Linthicum-Shiplely Improvement Association			
Anne Arundel County Council District 2		X		Linthicum-Shiplely Improvement Association			X
Anne Arundel County Council District 2	X		X	National Business Aviation Association (NBAA)			
Anne Arundel County Office of Planning and Zoning				North Linthicum Improvement Assoc	X	X	
Atlas Air				Provinces Civic Association	X	X	X
Baltimore County Office of Planning				Provinces Civic Association	X		X
BWI Business Partnership	X	X	X	Severn Improvement Association	X		
BWI Marshall Air Traffic Control Tower	X	X	X	Severn Improvement Association			
BWI Marshall Air Traffic Control Tower	X			Signature Flight Support			
Carriage Pines at Lake Village HOA	X			Southwest Airlines			
D.C. Metroplex BWI Roundtable	X		X	Spirit Airlines			
D.C. Metroplex BWI Roundtable	X	X	X	Timber Ridge Improvement Association			
D.C. Metroplex BWI Roundtable	X	X		United Airlines			
D.C. Metroplex BWI Roundtable	X	X	X	United Airlines			X
Delta Airlines				UPS			

BWI ANZ Contours

- Noise contours are developed for existing (2025), a five-year forecast (2030) and a ten-year forecast (2035)
- Operations are based on the FAA's Terminal Area Forecast
- FAA's Aviation Environmental Design Tool (AEDT) is used to develop noise contours
- BWI Marshall Highlights
 - 652 average daily operations in 2025, increasing to 796 by 2035
 - 10-Year forecast includes Rwy 15R/33L extension and parallel Rwy 10/28 construction
 - Inclusion of 2024 updated PBN procedures

Five Year (2030) Noise Contours

Total Annual Operations: 267,257

Total Area: 2,866 acres

1,904 acres (67%) on airport

962 acres (33%) off airport

878 acres in 65 dB contour

83 acres in 70 dB contour

1 acre in 75 dB contour

Population (estimated): 1,011

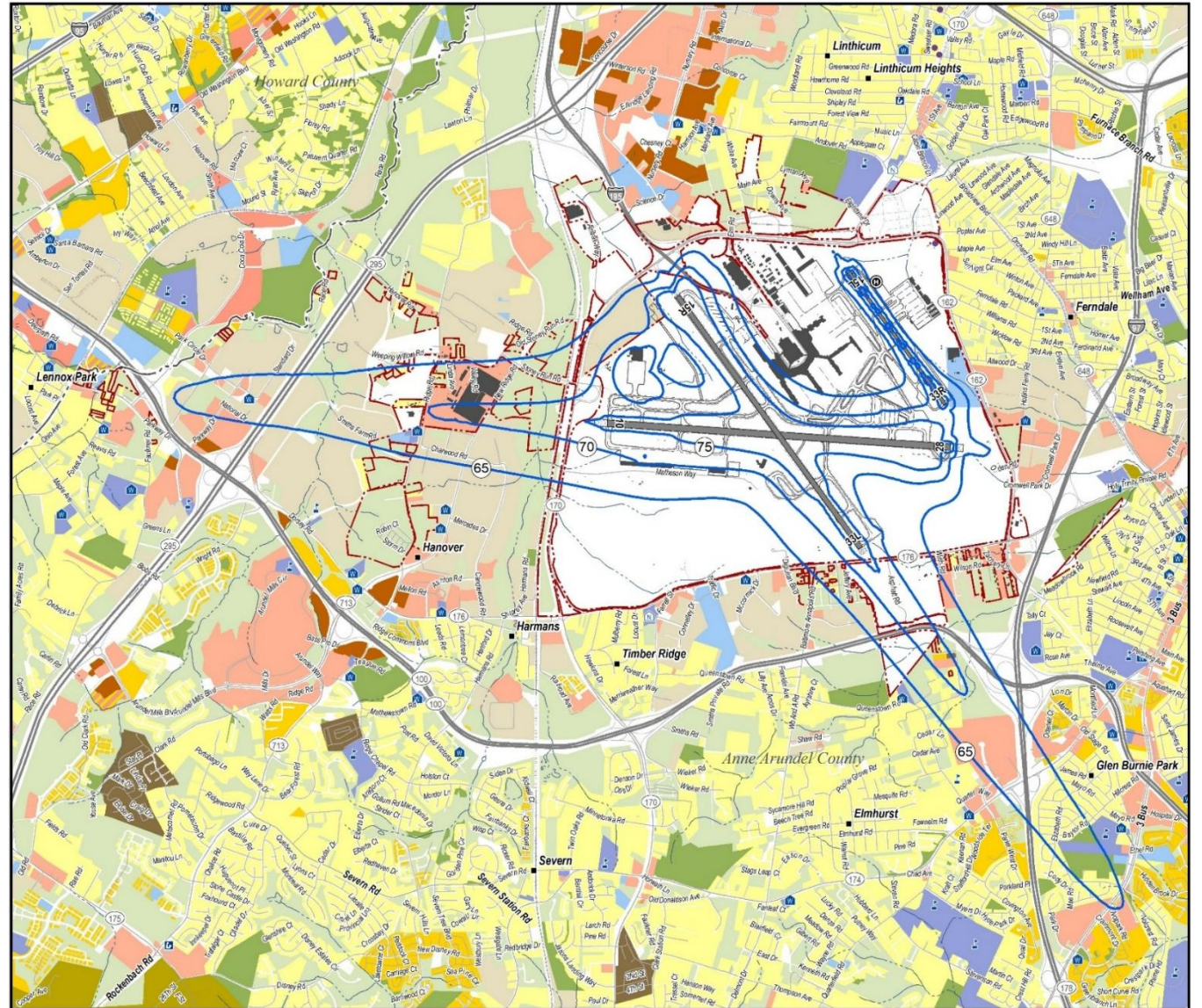
995 people in 65 dB contour

16 people in 70 dB contour

Housing units (estimated): 347

340 units in 65 dB contour

7 units in 70 dB contour



Ten Year (2035) Full Build Noise Contours

Total Annual Operations: 290,550

Total Area: 3,100 acres

2,121 acres (68%) on airport

979 acres (32%) off airport

891 acres in 65 dB contour

87 acres in 70 dB contour

1 acre in 75 dB contour

Population (estimated): 1,616

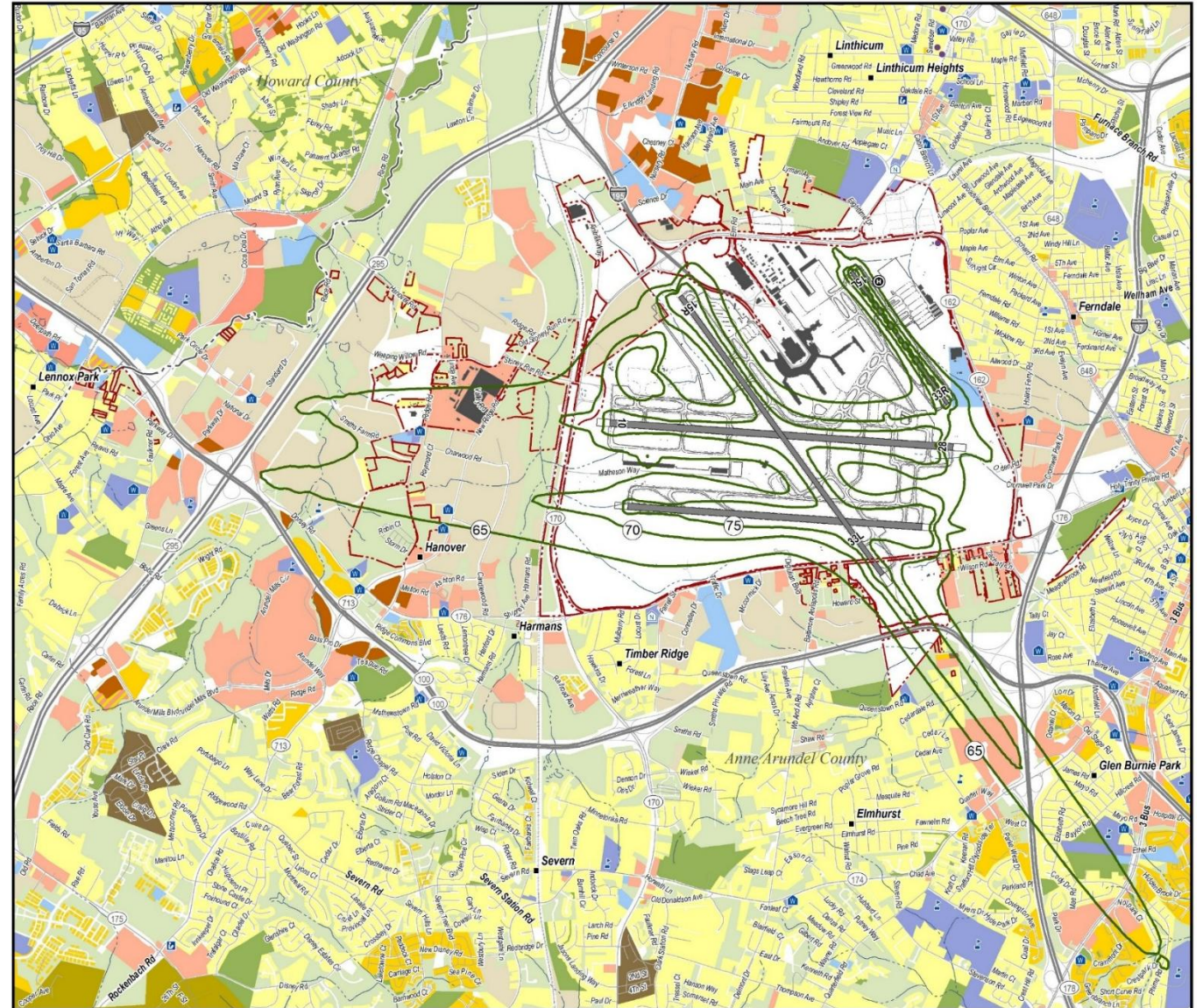
1,598 people in 65 dB contour

18 people in 70 dB contour

Housing units (estimated): 597

589 units in 65 dB contour

8 units in 70 dB contour



Ten Year (2035) No Build Noise Contours

Total Annual Operations: 290,550

Total Area: 2,690 acres

1,815 acres (67%) on airport

876 acres (33%) off airport

805 acres in 65 dB contour

70 acres in 70 dB contour

1 acre in 75 dB contour

Population (estimated): 962

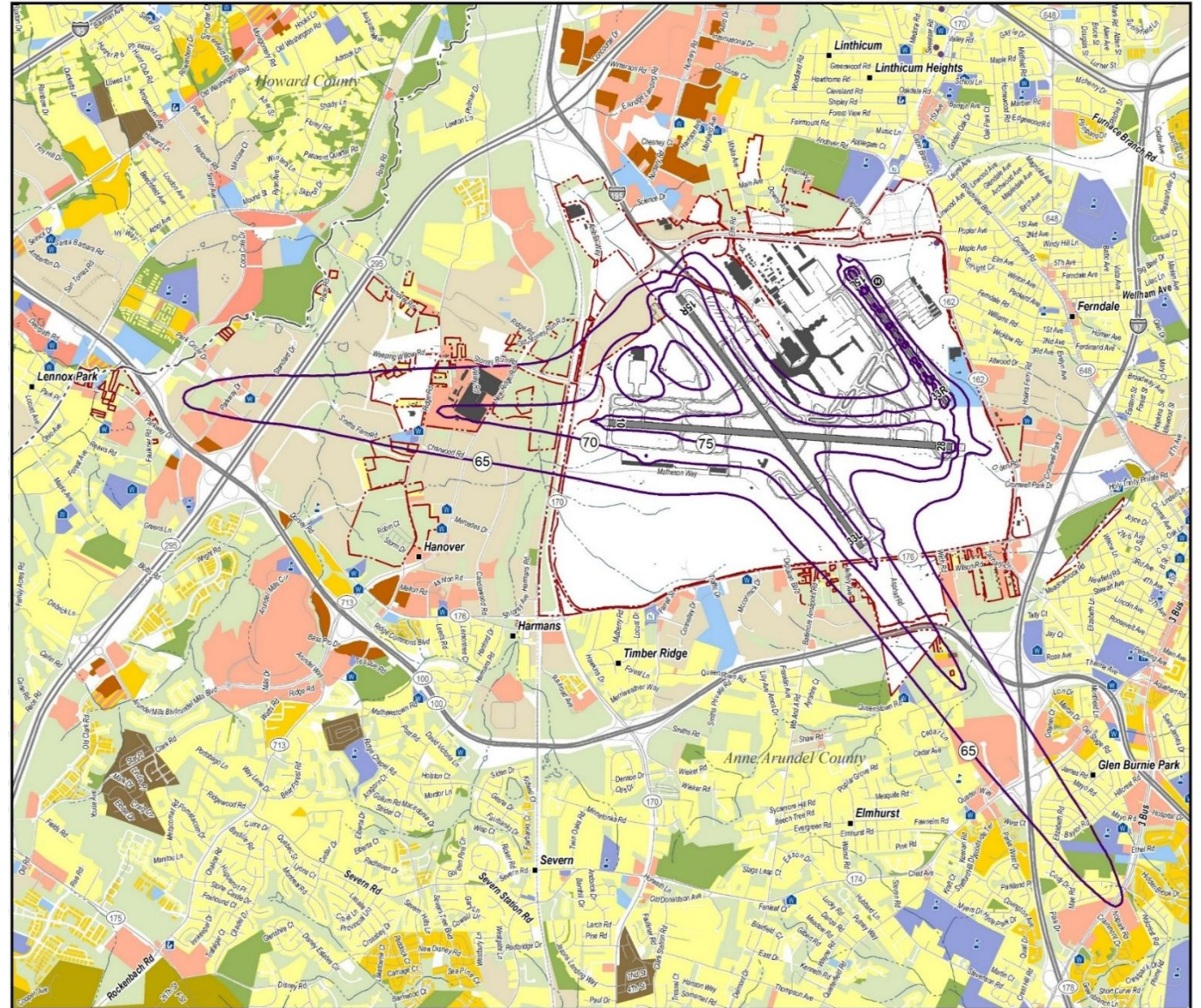
949 people in 65 dB contour

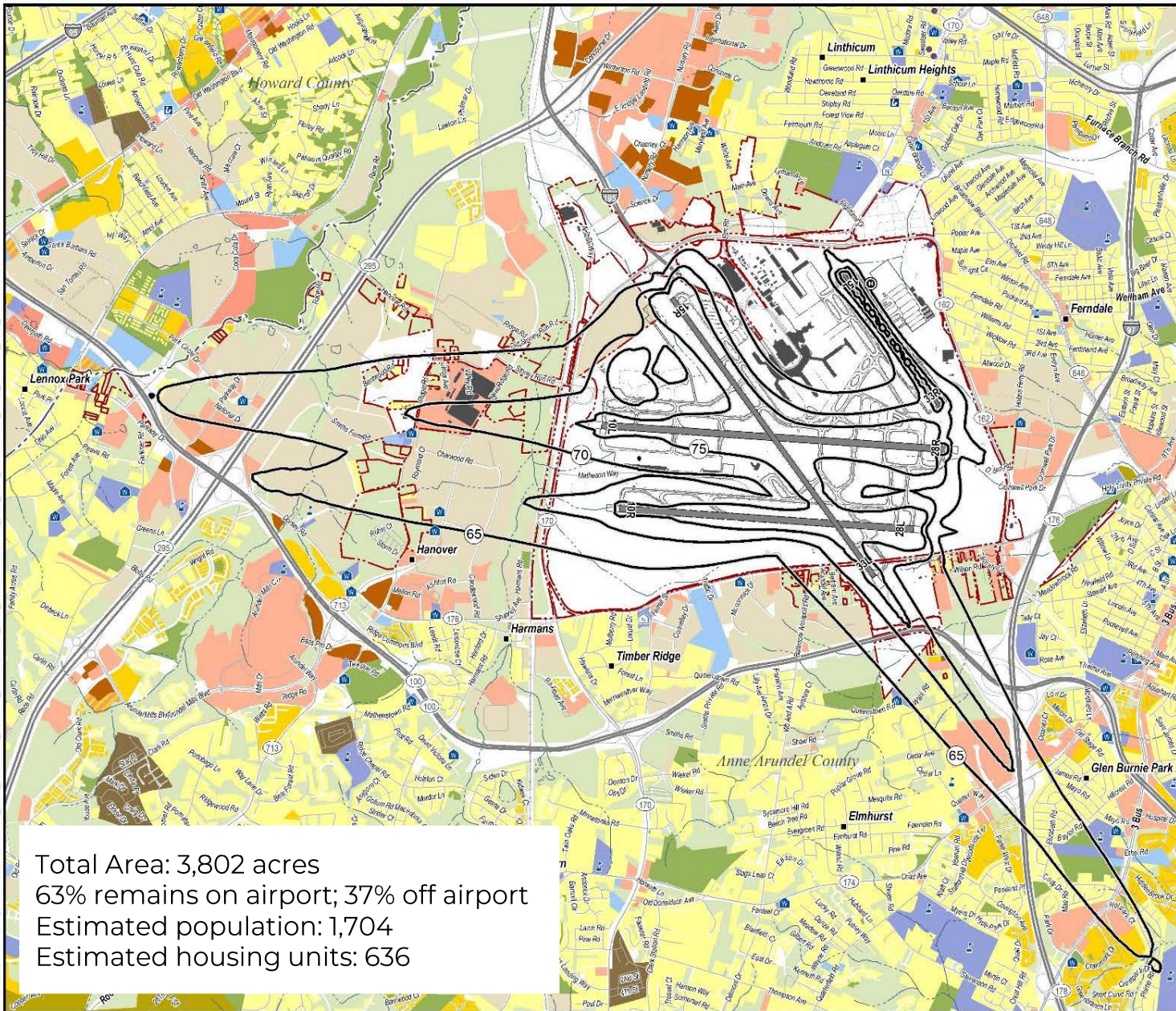
13 people in 70 dB contour

Housing units (estimated): 332

326 units in 65 dB contour

6 units in 70 dB contour





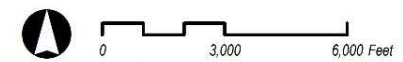
Total Area: 3,802 acres
 63% remains on airport; 37% off airport
 Estimated population: 1,704
 Estimated housing units: 636

Airport Noise Zone Update

Attachment 1
 2025 ANZ Contours

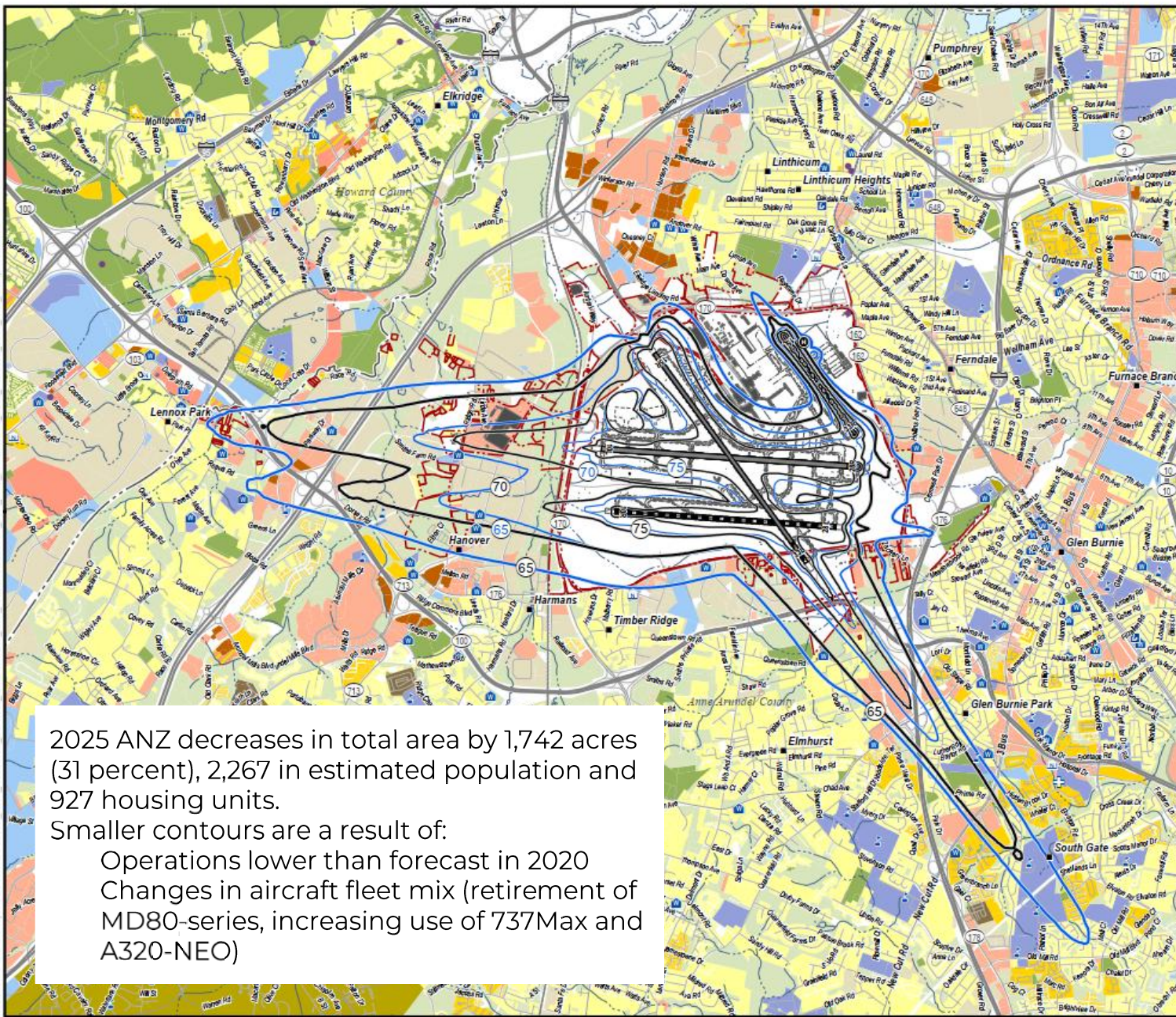
- 2025 ANZ Contours
- MAA Property Boundary
- Runup Locations
- Helicopter Operation Area
- Runway
- Airport Buildings
- Airport Pavement Edge
- Airport Pavement Shoulder
- County Boundary
- Roads
- Railroad
- Stream / Creek
- Residential Use
- Multi-Family Residential Use
- Mobile Home
- Transient Lodging
- Mixed Use
- Public Use (Non-Compatible)
- Public Use (Compatible)
- Water
- School
- Place of Worship
- Nursing / Assisted Living
- Military Use
- Commercial Use
- Manufacturing / Production
- Vacant / Undeveloped
- Recreational / Open Space
- Golf
- Transportation / Utility
- Library
- Hospital / Health Care
- Historic Place (NRHP)

Data Sources: Maryland Aviation Administration; Baltimore County Government
 Open Data Portal; Environmental Systems Research Institute (ESRI);
 AirNav.com; HMMH Inc.



Airport Noise Zone Update

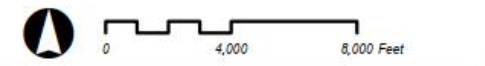
Attachment 2
 2025 ANZ Compared to 2020 ANZ



- 2025 ANZ Contours
- 2020 ANZ Contours
- MAA Property Boundary
- Runup Locations
- Runway
- Airport Buildings
- Airport Pavement Edge
- County Boundary
- Roads
- Railroad
- Stream / Creek
- Helicopter Operation Area
- Future Runway / Extension
- Airport Pavement Shoulder
- Military Use
- Commercial Use
- Manufacturing / Production
- Vacant / Undeveloped
- Recreational / Open Space
- Golf
- Transportation / Utility
- Residential Use
- Multi-Family Residential Use
- Mobile Home
- Transient Lodging
- Mixed Use
- Public Use (Non-Compatible)
- Public Use (Compatible)
- Water
- School
- Place of Worship
- Nursing / Assisted Living
- Library
- Hospital / Health Care
- Historic Place (NRHP)

2025 ANZ decreases in total area by 1,742 acres (31 percent), 2,267 in estimated population and 927 housing units. Smaller contours are a result of:
 Operations lower than forecast in 2020
 Changes in aircraft fleet mix (retirement of MD80-series, increasing use of 737Max and A320-NEO)

Data Sources: Maryland Aviation Administration; Baltimore County Government Open Data Portal; Environmental Systems Research Institute (ESRI); AirNav.com; HMMH Inc.



BWI Marshall NAP – Plan and Scope

- Noise abatement procedures are voluntary - the FAA has primary responsibility for implementation of flight procedures and the preferential runway use system at BWI Marshall
- The NAP was developed with the cooperation of airport users, the aviation industry, FAA, communities, and local governments. In 2024, FAA implemented new flight procedures that incorporated noise abatement procedures where possible
- The NAP has two general categories:
 - Noise Abatement Elements – Industry, FAA, and MAA
 - Strategies intended to reduce noise impacts for communities around the airport
 - Voluntary operational procedures such as control of ground-based noise sources, arrival and departure flight procedures, and a preferential runway use system
 - Land Use Elements – MAA
 - Summarizes the means of controlling and mitigating noise-sensitive development within the ANZ (Airport Zoning Permit approval or denial, appeals process, Residential Sound Insulation Program)
 - BWI Marshall Measures
 - Removal of Interstate Visual procedure, update to available engine run-up locations
 - Otherwise, review only; may be updated later as part of the 14 CFR Part 150 process

Updated BWI NAP Summary

Noise Abatement Elements

Aircraft Noise Abatement Departure Procedures

- » Noise abatement flight tracks for jet and propeller aircraft, which specify turn locations, for each runway based on aircraft type

Aircraft Noise Abatement Arrival Procedures

- » Visual approach/VFR jet noise abatement arrival procedures

Preferential Runway Use System

- » West flow operations are preferred for noise abatement
- » For noise abatement, Runway 28 is the preferred runway for departures, and Runway 33L the preferred runway for arrivals (2300 – 0500)
- » Limitations on the use of Runway 33R for departures and Runway 15L for arrivals (2300 -0500)
- » Practice landings and approaches by Jet and turboprop aircraft are prohibited on all runways (2300 to 0700)
- » Noise Rule for Runway 15L/33R (prohibits certain louder aircraft from using Runway 15L/33R)

Control of Ground Based Noise Sources

- » Powerback Restrictions
- » Engine Maintenance Runup Restrictions

Continued Monitoring

- » Noise Hotline
- » Quarterly and Annual Report
- » Airport Noise and Operations Monitoring System

Land Use Elements

Control of Incompatible Development

- » Airport Noise Zone
- » Board of Airport Zoning Appeals (BAZA)
- » Noise Zone Notification in Real Estate Transactions

Noise Assistance Programs

- » Homeowners Assistance Program (Residential Sound Insulation Program, RSIP)
- » Voluntary Residential Property Acquisition Program

Public Notice & Review

- **Proposed Action (updating COMAR) will be published in advance in the Maryland Register. Public notice will be provided via posting in:**
 - Baltimore Sun, Howard County Times, The Capital, Maryland Gazette
 - SAC members and Maryland State and Local elected officials will be notified directly
- **Document will be available for public review at the following locations:**
 - Electronically at MAA website (marylandaviation.com/noise)
 - Anne Arundel County Library Branches (Linthicum, Severn, Brooklyn Park, Riviera Beach, Glen Burnie Regional, Severna Park), Howard County Library Branches (East Columbia, Central, Elkridge, Miller, Savage), Baltimore County Library (Arbutus Branch)
- **Public Workshop and Hearing**
 - Thursday, March 19, 2026
 - 3:00 – 5:00 p.m. or 6:00 to 8:00 p.m.
 - 991 Corporate Blvd

**For
more
Information:**

